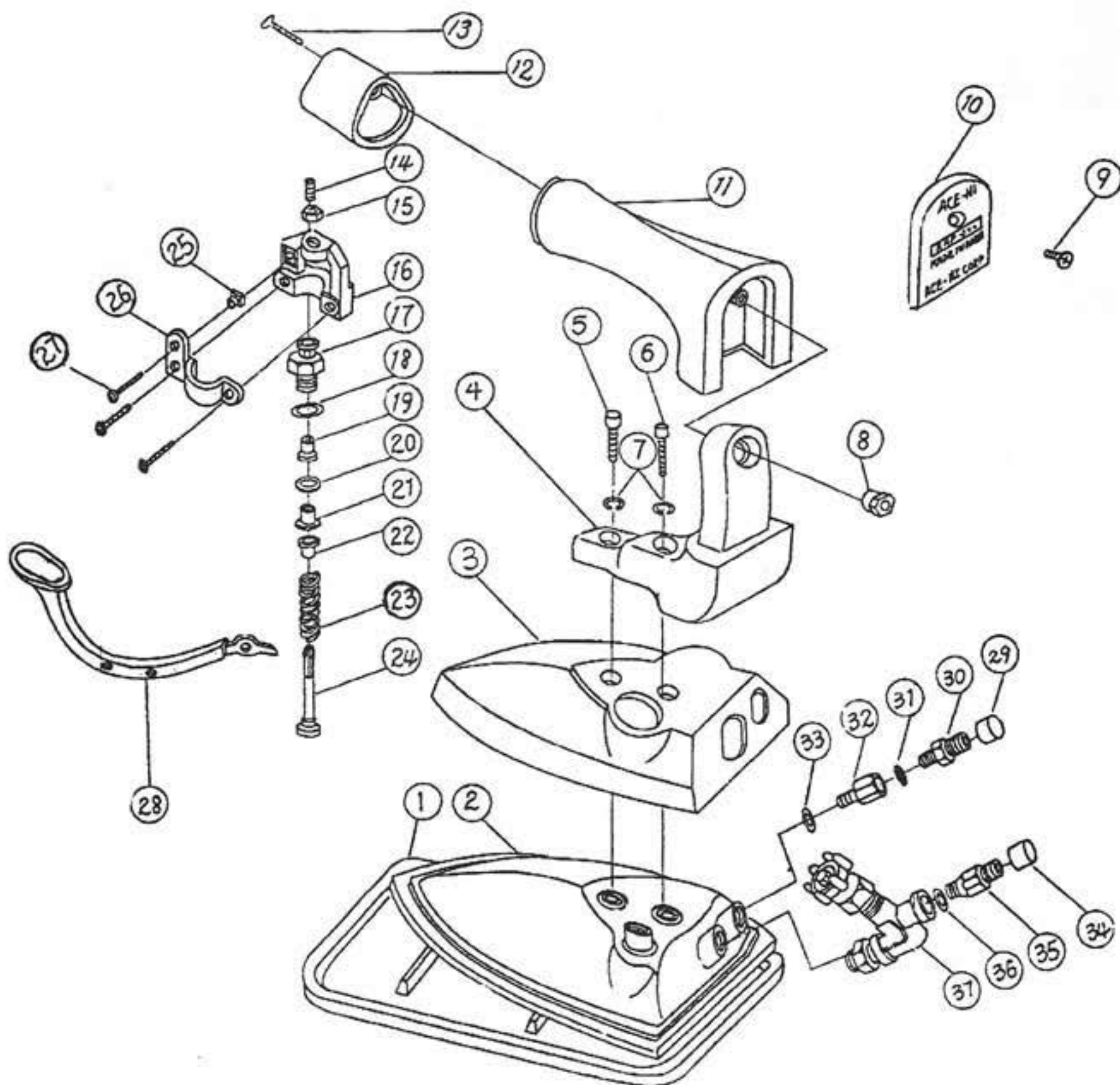


ACE-HI / AHP-300 ALL STEAM IRON



NO	PART NO.	DESCRIPTION	NO	PART NO.	DESCRIPTION
1	35057	Silicon Iron Rest	21	35025	Cap Seal
3	35013	Plastic Cover	22	35042	Brass Ring
4	35018	Handle Bottom	23	35041	Valve Spindle Spring
5	35034	Bolt for Handle Bottom(1/4 X 16)	24	35027	Steam Valve Spindle
	35034-Assy	Bolt and Spring Washer for Handle Bottom	25	30086	Fulcrum
6	35035	Bolt for Handle Bottom (1/4 X 20)	26	35031	Lever Clamp Outside
7	35053	Spring Washer	27	35045	Lever ClampScrew (M3 X 14)
8	35019	Nut for Handle	28	35051	Push Lever
9	35021	Screw for Name Plate	30	30210	Hose Nipple Extension (EF)
10	35020	Name Plate	31	40014	Mesh Filter
	35020-Assy	Name Plate with Screw (No. 9 & No. 10)	32	30209	Threaded Hose Nipple
11	35049	Handle	33	30120	Hose Nipple Packing
12	35016	Handle Front Cover	35	30031	Threaded Hose Nipple (E)
	35016-Assy	Handle Front Cover with Screw (No.12 & No. 13)	36	30119	Hose Nipple Packing
13	35017	Screw for Handle Cover (M4 X 35)	37	35022	Exhaust Body Ass'y
	HDL-300	Handle Complete for AHP300(No. 4 to No. 13)			Assembly Parts:
14	30080	Adjusting Screw (M6 X 35)	30000		Steam Flow Regulator (Die Cast): #14 to #16, #25 to #27
15	35033	Plastic Nut	35000		Steam Valve Repair Kit (#19 to #24)
16	35030	Lever Clamp Inside	35100		Steam Valve Replacement (#17 to #24)
17	35023	Steam Valve Body	36000		Strainer Ass'y (#30 to #33)
18	35044	Valve Body Silicone O-Ring	37000		Exhaust Valve Set Ass'y (#35 to #37)
19	35024	PTFE Bushing	7FT-KSB		7 Ft PTFE Hose
20	35043	Silicone O-Ring for Valve	300-SHOE		IRON Shoe for AHP-300
			SH-CVR		Steam Hose Cover (4Ft, Velcro Attached)